

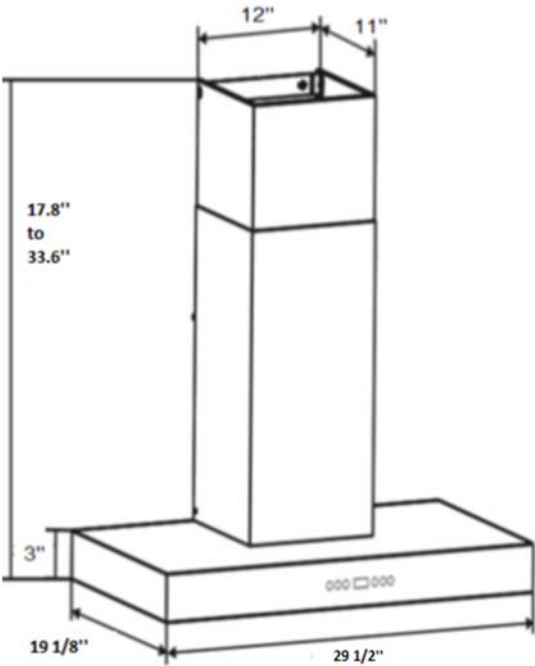


**AVL-306CS2**  
30" Wall mount Hood

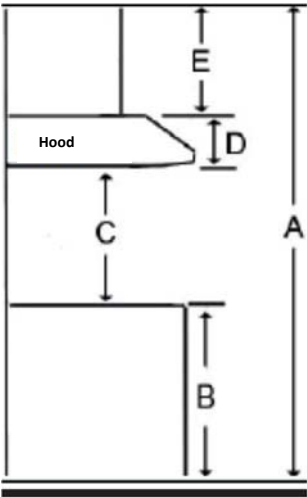


Selected Model	
Model number	AVL-306CS2
Dimensions	
Dimensions	29 1/2" (W) x 19 1/8" (D) x 3" (H)
Exterior Appearance	
Stainless steel grade	430
Features	
Control	Soft touch with full black frame
Lighting	2 bulbs, 2W LED (bulbs included)
Blower type	600 CFM, 5-speed
Blower performance	Speed 1, 2.4 sones Speed 5, 6.2 sones
Filter type	3 aluminium superior micro hole filters and stainless steel baffle filters included
Duct transition	6" Round (Top)
Ducting	Ducted
Chimney (ducted out)	For ceiling heights up to 8'0"
Electrical Requirements	
Electrical requirements	120V / 60Hz / 2.7 Amps
Warranty	
1-year Warranty	Parts and labour

Dimensions



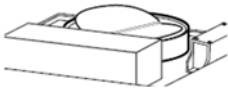
Installation



A	Floor to ceiling height	VARIABLE
B	Floor to counter top height (standard)	36"
C	Recommended height between cooking surface and bottom of the hood	28" to 30"
D	Hood height	3"
E	Cabinet height	20 ½ to 33.6"

Duct transition

6" Top round



The information contained herein is based on sources that we believe to be reliable, but is not guaranteed by us, may be incomplete and/or may change without notice.